

RMH8AC(M)5000

Shim type

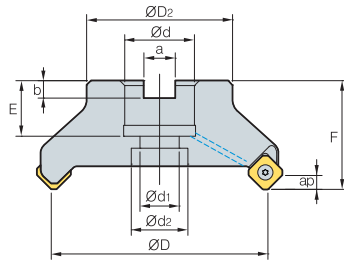


Fig. 1

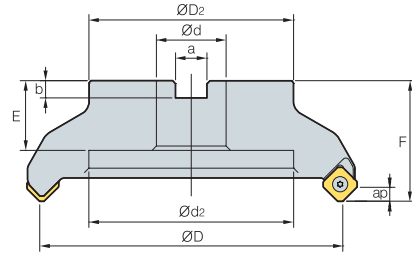


Fig. 2



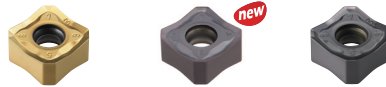
(mm)

Designation	ØD	ØD ₂	Ød	Ød ₁	Ød ₂	a	b	E	F	ap	kg	Fig.		
RMH8AC (RMH8ACM)	5080HR-M	6	80	57	25.4 (27)	14	20	9.5 (12.4)	6 (7)	25 (23)	50	7.5	1.2	1
	5100HR-M	7	100	67	31.75 (32)	18	26	12.7 (14.4)	8.0	33 (25)	63 (50)	7.5	2.5 (1.8)	1
	5125HR-M	8	125	87	38.1 (40)	22	32	15.9 (16.4)	10 (9)	36 (30)	63	7.5	3.6	1
	5160R-M	10	160	107	50.8 (40)	-	107	19 (16.4)	11 (9)	38 (32)	63	7.5	5 (4.56)	2
	5200R-M	12	200	130	47.625 (60)	-	135	25.4 (25.7)	14.0	38 (32)	63	7.5	7.1 (6.8)	2
	5250R-M	15	250	180	47.625 (60)	-	180	25.4 (25.7)	14.0	38 (32)	63	7.5	11.9 (10.6)	2
	5315R-M	20	315	240	47.625 (60)	-	238	25.4 (25.7)	14.0	38	63	7.5	19.1 (18.9)	2
	5400R-M	22	400	260	47.625 (60)	-	238	25.4 (25.7)	14.0	38	80	7.5	37.7 (37.5)	2

()Metric size

Available inserts

SNM(E)X-MF SNEX-ML SNM(E)X-MM



Designation	Cermet		Coated											Uncoated			page			
	CN2000	CN30	NCM325	NC5330	NCM535	NCM545	PC2505	PC2010	PC3600	PC3700	PC6510	PC9530	PC9540	PC5300	PC5400	ST30A		G10	H01	
SNEX	1507ANN-MF										●			●	●				E22	
	1507ANN-ML													●	●					E23
	1507ANN-MM													●	●			E24		
SNMX	1507ANN-MF				●				●	●	●			●	●					
	1507ANN-MM				●				●	●	●			●	●					

Available arbors

Designation	Available arbors	
	RMH8AC	RMH8ACM
RMH8AC (RMH8ACM)	BT□□-FMA25.4-□□	BT□□-FMC27-□□
	BT□□-FMA31.75-□□	BT□□-FMC32-□□
	BT□□-FMA38.1-□□	BT□□-FMB40-□□
	BT□□-FMA50.8-□□	BT□□-FMC40-□□
	BT□□-FMA47.625-□□	BT□□-FMB60-□□

Parts

Specification	Screw	Shim	Shim Screw	Wrench
Ø80~Ø400	FTGA0513	SS53RM8	SHXN0712F	TW20-100

Available inserts E22~E24 Available arbors and bolt E400~E402

